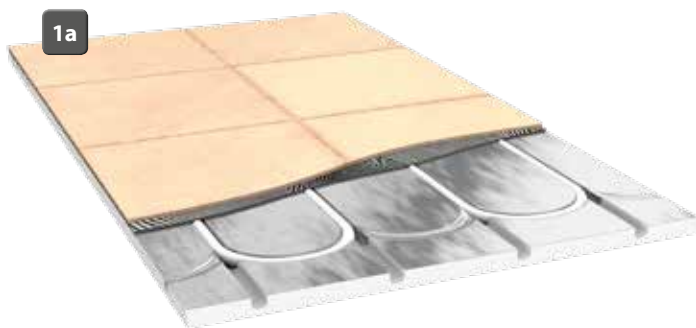


UFH Panel Spray Adhesive

UFH Overfloor board spray adhesive is a high performance, bonding adhesive formulated specifically to bond UFH EPS Overfloor boards – (Polystyrene) **(1a)** to concrete, screed and wood.

UFH spray has a fast drying formula with excellent high coverage designed for bonding insulation panels to exterior grade substrates. This formula has excellent resistance when dealing with moisture and extreme weather exposure.

When using UFH spray adhesive users must be aware of the environment in which the spray is to be applied. Ensure adequate ventilation, open windows and doors do not use in confined areas. Wear suitable protective gloves, face mask and clothing.



UFH Overfloor Board Spray Adhesive is a fast drying formula and has excellent coverage and resistance to moisture, weather and extreme exposure. The aerosol system reduces application cost, time and material.

- Fast drying formula
- Suitable for EPS – polystyrene
- High tack
- High coverage
- High temperature resistance
- No mess
- No waste
- Approx 5m² coverage per 500ml can

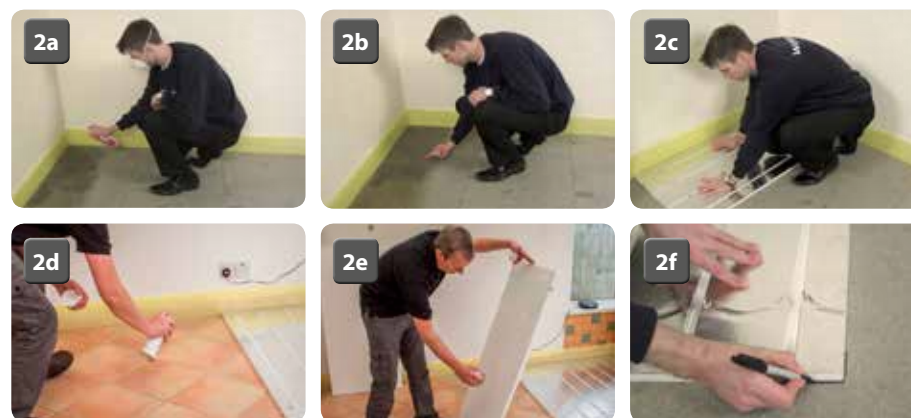
Application and Use

Do not store adhesive spray in a cold environment or directly on a cold concrete floor, for best results the spray adhesive and surfaces being bonded should be above 16°C, shake spray adhesive vigorously before use. If the spray pattern is uneven this is a sign that the adhesive is too cold.

UFH spray is a non-chlorinated solvent using CO₂ as propellant. For best results the surfaces to be bonded together must be clean, dry and free from dirt, dust, oil, loose paint, wax, grease, polish or any other contaminate that will prevent adhesion. Check compatibility by spraying a small test patch of the spray adhesive onto the substrate surface. Spray at a distance of about 10-20cm (4"-8") from the surface, holding the spray at an angle applying a uniform and even coat of spray adhesive obtaining an 80%-100% coverage **(2a)**.

Allow the adhesive to tack-off until no adhesive transfers to the knuckle when touched (Approx. 1 minute – dependent on environment conditions) **(2b)**. Place Overfloor board onto the adhesive and press down applying adequate even pressure to achieve maximum strength **(2c)**. Before placing Overfloor boards onto adhesive ensure you have selected the correct board to fit and check the orientation. When applying to an existing tiled floor or non-porous surface ensure the surface is prepared first, all traces of floor polish and cleaning products must be removed with a non-oil based cleaning agent such as methylated spirits. These type of floor finishes both the Overfloor board and the floor surface will require an even coat of spray adhesive. Apply to both surfaces **(2d/e)** and allow to become tacky then bring both surfaces together applying firm even pressure across the Overfloor board.

UFH spray adhesive is coloured to aid application a helpful tip is to 'dry' lay the Overfloor board and mark around the edges directly onto the floor with a marker pen **(2f)**. This will allow you to apply adhesive right up-to the edges of the board, minimising overspray and wastage.



Revision date: 25/5/2017

Important Safety Information

- Use in well ventilated areas
- Do not thin or reactivate with solvents
- Do not incinerate expelled cans
- Do not expose to extreme heat over
- Keep away from sources of ignition
- Avoid exposure to direct sunlight
- If adhesive is expelled wet or as a jet, aerosol is too cold - move to a warm environment and allow to acclimatise before re-using.

2

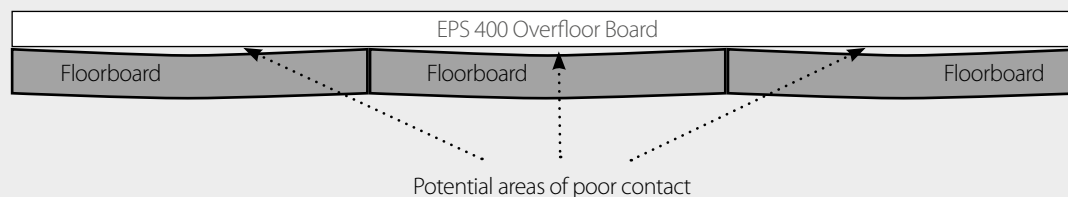
Technical Data

- Viscosity – 300 cps 25°C sp#2.30 r.p.m
- Total solids – 30.0% +/- 2%
- Colour – Blue or Green
- Flammability – Flammable adhesive in flammable propellant
- Shear >150 p.s.i
- Tensile (180° peel) > 25 p.s.i
- Shear adhesion failure temp (SAFT) 100gram >115°C
- Dry time 1-3 mins dependant on temp & humidity
- Packaging 500ml aerosol
- 22ltr canister

Important: When Bonding onto older floorboards

When using U F H spray to bond EPS boards onto existing floor boards, both the floor boards and the underside of the EPS board will require a covering of Wunda spray adhesive. This is necessary as older floor boards often develop a concave or convex surface due to distortions occurring in the wood over time (see illustration below) and this will potentially reduce the effective adhesion area.

Coating both the floor boards and board will reduce this effect and create maximum contact between the two surfaces giving a firm and secure fixing. As before, always carry out a test area with Wunda spray and board before commencing with the rest of the install. Seriously uneven floors may require levelling first.



Revision date: 25/5/2017

22 ltr canister & long wand spray gun user guide

For optimum results store canister above 18° during use. Keep canister off cold concrete floors during use. Keeping the canister in the cardboard shipping box will provide storage for the hose and gun between uses. If adhesive is expelled wet or as a jet, canister is too cold – move to a warm environment and allow to thoroughly acclimatize before re-using.

U F H Overfloor panel adhesive is a web spray suitable for bonding EPS Overfloor boards directly onto suitably prepared concrete/screed and wooden floors.

When connected, keep valve open and hose pressurised at all times – between uses this will prevent the adhesive from drying in the hose and gun.

3

- DO NOT close canister valve until ready to connect to a new pressurised canister.
- Use only in well ventilated areas.
- DO NOT thin or reactivate with solvents.
- DO NOT incinerate.
- DO NOT expose to extreme heat over 50°
- Keep away from sources of ignition.
- Release pressure in hose/gun before disconnecting hose from canister.
- Test for suitability before use.
- Avoid exposure to direct sunlight.



Spray Hose & Gun



Spray Tip



22 ltr Canister



4 mtr Hose

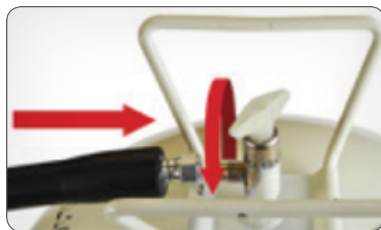
Revision date: 25/5/2017

Make sure that substrate is dry, clean, and free from dust, dirt, oil loose paint, wax, grease or any other substance that will prevent adhesion. Secure and or replace any loose floor boards, fill/level any imperfections in the substrate. We recommend shaking the canister well before use.

1 Attach and secure the hose onto the spray gun screw the larger nut to the gun thread (clockwise) and fully tighten with a spanner, check hose is securely attached. Check and tighten the spray tip this will give the correct spray distribution pattern.



2 Attach the opposite end of the hose onto the canister valve. Screw the smaller hose nut to the canister valve (clockwise) and fully tighten with a spanner. Check the hose is securely attached. Check and tighten all connections.



3 Turn the canister valve anti-clockwise until fully open. Check connections for leaks - if any occur, tighten connections. DO NOT TURN THE CANISTER VALVE OFF UNTIL THE CANISTER IS EMPTY AND YOU ARE READY TO REPLACE THE CANISTER WITH A NEW ONE (this is to prevent adhesive curing in the hose and gun).



Important:

Attach the opposite end of the hose onto the canister valve. Screw the smaller hose nut to the canister valve (clockwise) and fully tighten with a spanner. Check the hose is securely attached. Check and tighten all connections.

On initial use, or if canister has been standing for over 12 hrs, the hose and gun may require a purge. Pull the trigger and adjust flow by turning adjustment screw at the back of the gun (anticlockwise to open and clockwise to close). Dispense and discard adhesive until a consistent spray pattern is achieved.

4 Open the spray control knob on the back of the gun, open 2-3 full turns from shut and perform a test spray. The spray should form an even web pattern when held 10-20cm (4"-8") away from the substrate.

The ideal spray pattern should look like **pic c on page 5**, the easiest visual comparison that can be made to the correct spray pattern is that of a spiders web!. Opening the spray control knob will widen the spray pattern, closing the control knob will narrow the spray pattern.



5 Hold the gun at 90° angle to the surface, applying a uniform, even coat of adhesive to obtain 80%-100% coverage on the surface. If necessary, spray another coat in areas that appear to need more adhesive, some floor types may require a coat of adhesive to both the substrate and the underside of the Overfloor board. When applying to both surfaces apply one coat horizontally and the other coat vertically.



6 Allow adhesive to tack-off test for dryness using back of hand only; surface should be tacky but adhesive should not transfer to skin. Position the Overfloor board onto the adhesive, checking orientation before laying. Apply downward pressure onto the Overfloor board and smooth over ensuring a good bond between substrate and Overfloor board. Note; repositioning is not possible after contact has been made.



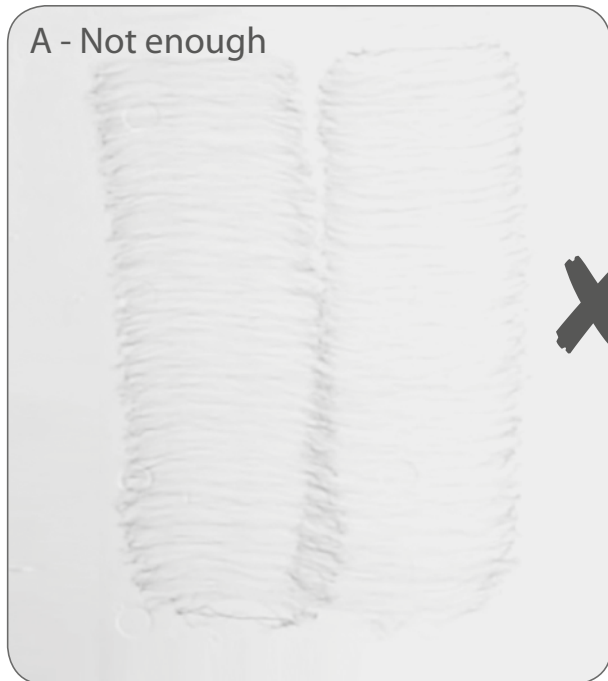
7 If the spray tip clogs, unscrew the spray tip from the gun lance and clean with a solvent such as lacquer thinner or acetone. DO NOT use a pin on the spray tip opening.

8 DO NOT turn off the valve on canister until ready to change canister (leaving the hose pressurised will prevent the adhesive from curing inside the hose).

Revision date: 25/5/2017

Spray pattern & coverage guidelines for both 500ml can & 22ltr canister

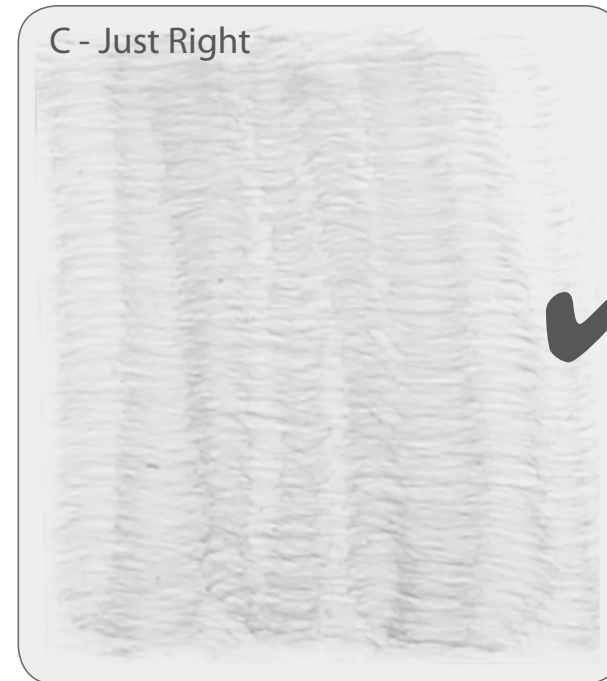
A - Not enough



B - Too much



C - Just Right



Revision date: 25/5/2017

Canister change over/replacement

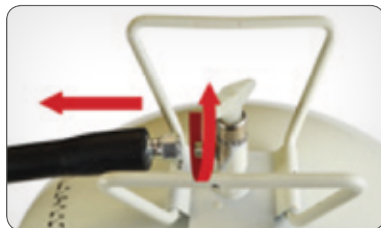
Important: safety glasses and gloves must be put on before starting the change over process

We recommend shaking the new canister well before use. If you are not transferring the hose and gun to a new canister you will need to clean it to ensure it can be used again on future jobs.

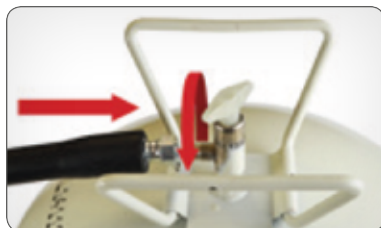
- 1 Turn the canister valve clockwise until fully closed. Pull the trigger on the gun and hold for 10 seconds to expel residual pressure.



- 2 Unscrew the hose nut and disconnect the hose from the empty canister (move to next page for canister disposal).



- 3 Connect the hose and gun to the new canister, screw the hose nut to the canister (clockwise) with a spanner. Check the hose is securely attached. Check and tighten ALL connections turn the canister valve anti-clockwise until fully open and check all connections for any leaks – if any occur, tighten connections. Test spray a small amount of adhesive to check for pressure.



IMPORTANT NOTE: THIS PROCESS SHOULD BE FOLLOWED THROUGH IMMEDIATELY AND ADHESIVE SHOULD BE DISPENSED FROM THE NEW CAN OR THE GUN AND HOSE WILL BLOCK AND BECOME UNUSABLE.

Canister disposal

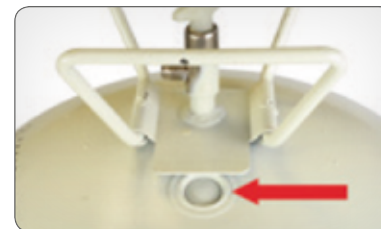
IMPORTANT: SAFETY GLASSES AND GLOVES MUST BE PUT ON BEFORE STARTING THE DISPOSAL PROCESS

- 1 Lay the empty canister on its side with the valve pointing AWAY from the operator, and well away from sources of ignition. Open the canister valve (anti-clockwise) and release any residual pressure. Allow the canister to remain on its side whilst pressure is released, laying the canister on its side will ensure no residue of adhesive is expelled – just propellant.



- 2 Stand canister upright. Use a hammer and brass punch or other non-sparking instrument to puncture the friable disc.

- 3 As long as the user is able to accept responsibility for de-pressurising the canister, it can be disposed of as per your normal scrap metal disposal (subject to local waste restrictions).



Transport information

During transport, the PPE, First Aid Kit and suitable Fire Extinguisher should be readily accessible in the vehicle.

Keep vehicle well ventilated at all times whilst it contains spray contact adhesive. Secure canister during transportation.



Revision date: 25/5/2017